

Mirage

COCKTAILS & MIXED DRINKS CASH \$12 • CARD \$12.36

- GIN & TONIC
 - MELON BALL
 - BRANDY ALEXANDER
 - BLOODY MARY
 - KAMIKAZE
 - PINA COLADA
 - BLACK RUSSIAN
 - TEQUILA SUNRISE
 - LONG ISLAND ICED TEA
 - WHITE RUSSIAN
 - B-52
 - ANGEL'S KISS
 - MUDSLIDE
 - MARGARITA
 - MALIBU BAY BREEZE
 - COSMOPOLITAN
 - ZOMBIE
 - RUSTY NAIL
 - SEX ON THE BEACH
 - JOLLY RANCHER
 - CLASSIC FROZEN MARGARITA
 - APHRODITE (MADE WITH ICE CREAM)
 - CHAMPAGNE COCKTAIL (MINIMUM 2)
- STRAWBERRY, PASSION FRUIT, MANGO, PINEAPPLE
+2 | +2.06

MARTINIS

	CASH	CARD
VODKA OR GIN	12	12.36
BLUE MARTINI	12	12.36
CHOCOLATE MARTINI	12	12.36
APPLE MARTINI	12	12.36
PEACH MARTINI	12	12.36

VODKA | GIN | RUM

	CASH	CARD
KETEL ONE	12	12.36
TITO'S	12	12.36
GREY GOOSE	13	13.39
STOLICHNAYA OR ABSOLUT	13	13.39
BEEFEATER OR TANQUERAY	13	13.39
BOMBAY	13	13.39
HENDRICK'S	12	12.36
BENHAM'S	12	12.36
BACARDI	12	12.36
MALIBU	12	12.36

TEQUILA

	CASH	CARD
AHA YETO BLANCO	12	12.36
PATRÓN	13	13.39
CASAMIGOS BLANCO	12	12.36
CASAMIGOS REPOSADO	13	13.39
CASAMIGOS AÑEJO	14	14.42
CASAMIGOS MEZCAL	14	14.42
DON JULIO BLANCO	14	14.42
DON JULIO REPOSADO	15	15.45
DON JULIO AÑEJO	17	17.51
ESPOLÓN	12	12.36
LALO	12	12.36
HERRADURA	12	12.36
TEQUILA REPOSADO EL CABALLERO ..	19	19.57
LA LEYENDA DE MÉXICO AÑEJO	29	29.87
CLASE AZUL	37	38.11
DON JULIO 1942	40	41.20
MAESTRO DOBEL	50	51.50

CORDIALS

	CASH	CARD
IRISH CREAM	13	13.39
GRAND MARNIER	14	14.42
DRAMBUIE	14	14.42
SAMBUCA OR ANISETTE	13	13.39
AMARETTO	14	14.42
KAHLUA	14	14.42

BOURBON

	CASH	CARD
BULLEIT BOURBON	12	12.36
BULLEIT RYE	12	12.36
FOUR ROSES BOURBON	12	12.36
FOUR ROSES SMALL BATCH	12	12.36
JIM BEAM BOURBON	12	12.36
CROWN ROYAL	12	12.36
JACK DANIELS	13	13.39
CANADIAN CLUB	13	13.39

SCOTCH | WHISKEY

	CASH	CARD
JAMESON	12	12.36
GLENFIDDICH SINGLE MALT	12	12.36
CHIVAS	13	13.39
JOHNNIE WALKER BLACK	14	14.42
GLENLIVET 12 YR	14	14.42
DEWAR'S	13	13.39
BALVENIE 12 YEAR	16	16.48
MACALLAN	16	16.48
OBAN 14 YEAR	22	22.66
OBAN 18 YEAR	40	41.20
JOHNNIE WALKER BLUE	47	48.41

BRANDY | COGNAC

	CASH	CARD
METAXA 5 STAR	15	15.45
REMY MARTIN	15	15.45
HENNESSY	16	16.48
HENNESSY XO	40	41.20

WINE

WHITE

	CASH	CARD
CHARDONNAY	32	32.96
PINOT GRIGIO	32	32.96

RED

	CASH	CARD
CABERNET SAUVIGNON	32	32.96
PINOT NOIR, RESERVE	32	32.96
MERLOT	32	32.96

RED SANGRIA

	CASH	CARD
HALF PITCHER	15	15.45
FULL PITCHER	20	20.60

HOUSE RED OR WHITE

	CASH	CARD
HALF CARAFE	15	15.45
FULL CARAFE	20	20.60

INDIVIDUAL (187ML SPLITS)

	CASH	CARD
MERLOT	9	9.29
PINOT GRIGIO	9	9.29
WHITE ZINFANDEL	9	9.29



BEER CASH \$8 • CARD \$8.24

- MICHELOB ULTRA LOW CARB
- HEINEKEN
- BUDWEISER
- SAMUEL ADAMS
- COORS LIGHT
- STELLA ARTOIS
- CORONA
- O'DOUL'S NON-ALCOHOLIC
- BECK'S

YOU MAY ALSO BRING YOUR OWN BOTTLE FOR A \$25 | \$ 25.75 CORKAGE FEE

*WE RESERVE THE RIGHT TO ADD 18% GRATUITY ON CHECKS OVER \$50. THANK YOU.

*CONSUMING RAW OR UNDER COOKED MEATS, POULTRY, SEAFOOD, SHELLFISH, OR EGGS MAY INCREASE YOUR RISK OF FOOD BORNE ILLNESS.

APPETIZERS



COMBO PLATTER



HOT ANTIPASTO



CHILDREN'S MENU



STARTERS

	CASH	CARD
MOZZARELLA STICKS (6)	9	9.27
POTATO SKINS - BROCCOLI, BACON, & CHEDDAR CHEESE	11	11.33
FRIED ZUCCHINI STICKS	10	10.30
CHEESE FRIES	9	9.27
FRENCH FRIES PARMIGIANA	10	10.30
CHEESE CURLY FRIES	10	10.30
SWEET POTATO FRIES	8	8.24
SPANISH FRIES - THIN-SLICED POTATO WITH ONIONS & PEPPERS ..	11	11.33
STUFFED GRAPE LEAVES - WITH FETA CHEESE	8	8.24
SPINACH PIE	11	11.33
ARTICHOKE OREGANATO	11	11.33

	CASH	CARD
FRIED CALAMARI	17	17.51
JUMBO SHRIMP COCKTAIL (5)	17	17.51
FRIED SHRIMP (5)	17	17.51
STUFFED MUSHROOMS (4) - CRABMEAT OR FETA CHEESE & SPINACH STUFFING	14	14.42
BAKED STUFFED CLAMS (4) - CHOPPED CLAM STUFFING	12	12.36

	CASH	CARD
BUFFALO WINGS (8) - REG., MILD, OR HOT	12	12.36
CHICKEN FINGERS (5)	11	11.33
CHICKEN FINGERS - WITH FRENCH FRIES	15	15.45
BBQ BABY BACK RIBS - 1 1/2 RACK	16	16.48
STUFFED CABBAGE	9	9.27
CHOPPED CHICKEN LIVER	8	8.24

COMBO PLATTER


CHICKEN WINGS, CHICKEN FINGERS, MOZZARELLA STICKS, CURLY FRIES, & POTATO SKINS 18 | 18.54

HOT ANTIPASTO

EGGPLANT PARMIGIANA, TWO STUFFED CLAMS, TWO STUFFED MUSHROOMS, TWO ARTICHOKEs, & ONE STUFFED CABBAGE 18 | 18.54

MACARONI & CHEESE CASSEROLE

BAKED PASTA IN A RICH, CREAMY CHEESE SAUCE WITH A GOLDEN CRUST 12 | 12.36



CHILDREN'S MENU

SERVED WITH SMALL MILK OR SODA & DESSERT
(JELL-O, CHOCOLATE PUDDING,
RICE PUDDING, OR ICE CREAM)

SPAGHETTI
13 | 13.39

GRILLED CHEESE - WITH FRENCH FRIES
13 | 13.39

HAMBURGER - WITH FRENCH FRIES
14 | 14.42

HOT DOG - WITH FRENCH FRIES
14 | 14.42

CHICKEN FINGERS - WITH FRENCH FRIES
14 | 14.42

DINE-IN ONLY • NO SUBSTITUTIONS • UNDER 12

WE DONT MIND PEOPLE SHARING THEIR MEAL.
WE ENCOURAGE IT BY GIVING YOU A NICE PORTION.
HOWEVER, WE DO HAVE A REQUIREMENT THAT EVERYONE
AT THE TABLE MUST MEET A \$6 MINIMUM.
(SUGGESTIONS: EXTRA VEGETABLES, HOUSE SALAD, YOGURT, ETC.)
- NO EXCEPTIONS PLEASE -
THANK YOU & ENJOY!

PHOTOS ARE FOR SUGGESTION ONLY
ACTUAL PLATTERS MAY APPEAR DIFFERENT
*WE RESERVE THE RIGHT TO ADD 18% GRATUITY
ON CHECKS OVER \$50. THANK YOU.

SALADS

	CASH	CARD
MIRAGE SALAD SPECIAL - ROMAINE LETTUCE, BROCCOLI, CAULIFLOWER, AVOCADO, ONIONS, SCALLIONS, TOMATOES, ARTICHOKE HEARTS, & FETA CHEESE .	18	18.54
ARIZONA SALAD - CHOPPED ROMAINE LETTUCE, TOMATO, SCALLION, BASIL, RADISH, GREEN PEPPER, RED ONION, AVOCADO, & BEANS	18	18.54
ALL BEAN SALAD - CHOPPED ROMAINE LETTUCE WITH BABY CORN, CHICKPEAS, KIDNEY BEANS, & BLACK BEANS IN A GARLIC SAUCE	18	18.54
SUMMER SALAD - MANDARIN, AVOCADO, CRANBERRIES, MESCLUN GREENS, ROMAINE LETTUCE, & RASPBERRY VINAIGRETTE	18	18.54
GREEK SALAD - MIXED GREENS, FETA CHEESE, OLIVES, & ANCHOVIES	18	18.54
CHEF SALAD - ROLLED TURKEY, ROAST BEEF, HAM, & SWISS CHEESE ON MIXED GREENS WITH A HARD-BOILED EGG.	18	18.54
CAESAR SALAD - ROMAINE LETTUCE, CROUTONS, CAESAR DRESSING, & GRATED PARMESAN CHEESE	14	14.42
WITH CHICKEN	19	19.57
WITH GRILLED SALMON, STEAK, OR GRILLED SHRIMP	22	22.66
MESCLUN SALAD WITH GRILLED CHICKEN	19	19.57
WITH GRILLED SALMON OR GRILLED TUNA	23	23.69
DIET SALAD BOWL - MIXED GREEN SALAD WITH A SCOOP OF TUNA SALAD.	18	18.54
SPINACH SALAD - WITH TOMATOES, FRESH MUSHROOMS, BASIL, HARD-BOILED EGG, BACON, & CROUTONS	17	17.51
AVOCADO DELIGHT - STUFFED WITH TUNA, SHRIMP, OR CHICKEN SALAD	17	17.51
TURKEY WALNUT SALAD - TURKEY, WALNUTS, RAISINS, BROCCOLI, CAULIFLOWER, TOMATO, SLICED EGG, & OLIVES OVER ROMAINE LETTUCE	19	19.57
COBB SALAD - TURKEY, IND. TUNA OR IND. SALMON WITH CARROTS, OLIVES, CHICK PEAS, FETA CHEESE, & EGG OVER CHOPPED LETTUCE & TOMATO	19	19.57
STRAWBERRY SALAD - MESCLUN GREENS, ENDIVE, ALMONDS, ZUCCHINI, & SLICED STRAWBERRIES WITH CHOICE OF FETA OR MOZZARELLA	18	18.54

ADD TO YOUR SALAD

GRILLED CHICKEN +8 | +8.24 • GRILLED SALMON +9 | +9.27 • SCOOP OF TUNA +7 | +7.21
PAN SEARED TUNA +9 | +9.27 • HEARTS OF PALM +5 | +5.15 • GOAT CHEESE +5 | +5.15

COLD SALAD PLATTERS

	CASH	CARD
SOLID WHITE TUNA PLATTER	17	17.51
EGG OR CHICKEN SALAD	15	15.45
IND. TUNA, SALMON, OR SARDINES	16	16.48
SHRIMP SALAD	17	17.51

SOUPS

	CASH	CARD
CUP	5	5.15
BOWL	7	7.21
CROCK OF FRENCH ONION SOUP	9	9.27
TAKEOUT (PINT)	7	7.21
TAKEOUT (QUART)	10	10.30

DIET DELIGHTS

	CASH	CARD
PINEAPPLE DELIGHT - STUFFED WITH COTTAGE CHEESE, RAISINS, WALNUTS, & SHREDDED CARROTS	15	15.45
CALIFORNIA FRUIT SALAD - FRESH FRUIT SALAD WITH COTTAGE CHEESE & JELL-O ON A BED OF LETTUCE	13	13.39
HAWAIIAN SALAD - COTTAGE CHEESE, SLICED PEACHES, PEARS, & PINEAPPLE ON A BED OF LETTUCE.	13	13.39

TRIPLE DECKERS

CHOICE OF POTATO SALAD OR FRENCH FRIES, COLE SLAW, & PICKLE

	CASH	CARD
1. SLICED TURKEY & BACON	16	16.48
2. CHICKEN SALAD & BACON	15	15.45
3. EGG SALAD & BACON	14	14.42
4. TUNAFISH & SLICED EGG	15	15.45
5. TURKEY, BOILED HAM, LETTUCE, & TOMATO	16	16.48

CURLY, SWEET POTATO FRIES, VEGETABLE, OR LETTUCE & TOMATO +2 | +2.06

PANINI

GRILLED ON CIABATA WITH EXTRA VIRGIN OLIVE OIL & BALSAMIC VINEGAR

	CASH	CARD
1. GRILLED VEGETABLES - ZUCCHINI, EGGPLANT, ROASTED PEPPERS, MOZZARELLA, & MESCLUN GREENS	13	13.35
2. ROMA - TOMATOES, MOZZARELLA, ROASTED PEPPERS, & MIXED GREENS	13	13.35
3. CAMPAGNOLO - GRILLED CHICKEN, ROASTED PEPPERS, MOZZARELLA, & MIXED GREENS	17	17.51
4. AMERICANO - SLICED LONDON BROIL, PEPPERS, ONIONS, & MOZZARELLA CHEESE	23	23.69
5. NEW YORKER - GRILLED CHICKEN, MUSHROOMS, & CHEDDAR CHEESE	18	18.54
6. MIRAGE PANINI - LONDON BROIL, AVOCADO, & FETA CHEESE	23	23.69

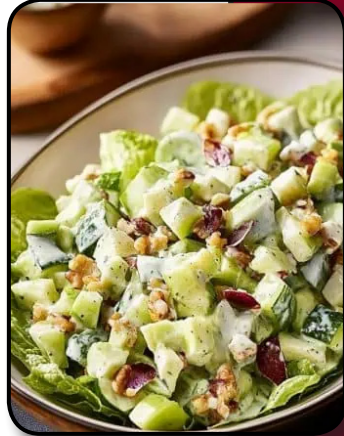
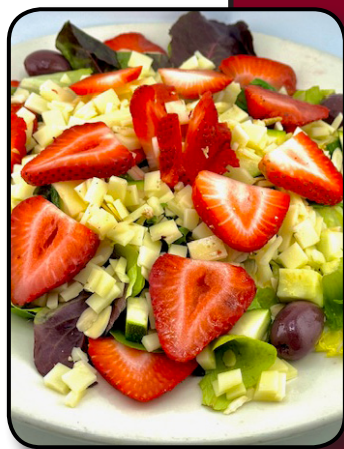
FRENCH FRIES +3 | +3.09 • SALAD +5 | +5.15

AMANDA & JOYCE'S AVOCADO TOAST
TOMATO, CUCUMBER, AVOCADO, HARD-BOILED EGG WHITE & BALSAMIC VINEGAR ON WHOLE GRAIN TOAST 12 | 12.36

CHEESE BLINTZES
WITH SOUR CREAM. 13 | 13.39

STUFFED BAKED POTATOES
WITH MUSHROOMS OR BROCCOLI OR SPINACH & LOW-FAT MOZZARELLA. 10 | 10.30
ADD BACON +3 | +3.09

SANDWICH ON A PLATE
SERVED ON LETTUCE WITH CUCUMBER, PEPPER, RADISH, & SCALLION
TUNA SALAD 12 | 12.36 • EGG SALAD 10 | 10.30 • SHRIMP SALAD 13 | 13.39
IND. TUNA 12 | 12.36 • IND. SALMON 12 | 12.36



SALADS SALAD PLATTERS SOUPS DIET DELIGHTS TRIPLE DECKERS



SANDWICHES

SERVED ON RYE, WHITE, OR WHOLE WHEAT BREAD

	CASH	CARD
MEAT		
BLT - BACON, LETTUCE, & TOMATO	8	8.24
BOILED HAM	11	11.33
WITH SWISS CHEESE	14	14.42
WITH AMERICAN CHEESE	13	13.39
CHICKEN SALAD - WITH LETTUCE	9	9.27
WITH BACON	11	11.33
CHEESE		
GRILLED AMERICAN CHEESE	6	6.18
WITH TOMATO	8	8.24
WITH BACON, HAM, & TOMATOES	11	11.33
GRILLED SWISS CHEESE	7	7.21
WITH TOMATO	9	9.27
WITH BACON, HAM, & TOMATOES	12	12.36
EGG		
EGG SALAD	7	7.21
WESTERN	10	10.30
FISH		
FRIED FILET OF SOLE	23	23.69
BROILED FILET OF SOLE	23	23.69
TUNA (IND.) OR IMPORTED SARDINES (IND.)	10	10.30
SALMON (IND.)	10	10.30
CHUNKY SHRIMP SALAD	13	13.39
TUNA SALAD	10	10.30
ADD FRENCH FRIES +4 +4.12 • TOMATOES +.75 +.77 ON HERO BREAD, PANINI, ENGLISH MUFFIN, BAGEL, OR ROLL +1 +1.03		

THE CARVING BOARD

	CASH	CARD
PASTRAMI OR CORNED BEEF	20	20.60
MARYLAND TURKEY	18	18.54
ROAST VIRGINIA HAM	15	15.45
NEW YORK REUBEN - WITH MELTED SWISS	20	20.60
BRISKET OF BEEF	22	22.66
ROAST BEEF	18	18.54
SLICED ROUMANIAN STEAK	26	26.78

DELI DUO

CHOICE OF TWO MEATS: TURKEY, CORNED BEEF, ROAST BEEF, BRISKET, OR PASTRAMI, SERVED ON TWO DINNER ROLLS WITH FRENCH FRIES OR POTATO SALAD 23 | 23.69

TUNA OR CHICKEN MELT

ON ENGLISH MUFFIN

13 | 13.39

CHINESE ROAST PORK

ON A HERO WITH FRENCH FRIES

16 | 16.48

FRENCH DIP

ROAST BEEF ON GARLIC HERO BREAD WITH MELTED MOZZARELLA, SERVED WITH NATURAL GRAVY & CURLY FRIES

21 | 21.63

SUPER SPECIAL WRAPS

PLAIN, WHOLE WHEAT, OR SPINACH WRAP (SERVED WITH FRENCH FRIES)
GLUTEN FREE WRAPS AVAILABLE +1 | +1.03

	CASH	CARD
1. GRILLED VEGGIE PORTOBELLO WRAP - ZUCCHINI, ROASTED PEPPERS, & CARAMELIZED ONIONS	13	13.39
2. TUNA OR CHICKEN SALAD WRAP - WITH LETTUCE & TOMATO	14	14.42
3. GRILLED CHICKEN WRAP - WITH BACON, LETTUCE, TOMATO, & HONEY MUSTARD DRESSING	17	17.51
4. GRILLED CHICKEN CAESAR WRAP - WITH CAESAR DRESSING	17	17.51
5. COBB WRAP - GRILLED CHICKEN WITH BACON, LETTUCE, TOMATO, & BLEU CHEESE	17	17.51
6. TERIYAKI WRAP - CHOICE OF BEEF OR CHICKEN	18	18.54
7. GRILLED CHICKEN GREEK WRAP - WITH GREEK SALAD	17	17.51
8. FRESH TURKEY WRAP - WITH BACON, LETTUCE, TOMATO, & HOUSE DRESSING ..	16	16.48
9. GRILLED SALMON WRAP - WITH AVOCADO, LETTUCE, & TOMATO	19	19.57
10. MEXICAN WRAP - LONDON BROIL, RICE, GRILLED ONIONS, JALAPEÑO PEPPERS, & AVOCADO	21	21.63
11. SEARED TUNA WRAP - WITH ROMAINE LETTUCE, AVOCADO, ROASTED PEPPERS, & CHIPOTLE MAYO	20	20.60
CURLY, SWEET POTATO FRIES, VEGETABLE, OR LETTUCE & TOMATO +2 +2.06		

OPEN SANDWICHES

SERVED WITH SOUP OR SALAD, POTATO, & VEGETABLE

YOUR CHOICE 28 | 28.84

VIRGINIA HAM • CORNED BEEF • PASTRAMI
MARYLAND TURKEY • TOP SIRLOIN OF BEEF • BRISKET OF BEEF

CHICKEN SANDWICHES

SERVED WITH FRENCH FRIES

	CASH	CARD
GRILLED CHICKEN OR BBQ CHICKEN	17	17.51
CHICKEN ROMA - WITH MELTED MOZZARELLA & GRILLED TOMATOES	17	17.51
CHICKEN SANTA FE - WITH BACON & CHEDDAR CHEESE	18	18.54
CHICKEN ALPINE - WITH SWISS CHEESE & HAM	18	18.54
CHICKEN ALBA - WITH SPINACH, MUSHROOMS, & SWISS CHEESE	18	18.54

CHICKEN FINGERS

WITH FRENCH FRIES

15 | 15.45

BURGER CORNER

	CASH REG.	CARD REG.	CASH DLX.	CARD DLX.
BEEF BURGER	10	10.30	14	14.42
CHEESE BURGER	11	11.33	15	15.45
BACON BURGER	13	13.39	17	17.51
BACON CHEESE BURGER	14	14.42	18	18.54
PIZZA BURGER	14	14.42	18	18.54
TWIN BURGER	19	19.57	23	23.69
TWIN CHEESE BURGER	20	20.60	24	24.72
TURKEY BURGER	11	11.33	15	15.45
VEGETABLE BURGER	10	10.30	14	14.42
SALMON BURGER	13	13.39	17	17.51
TUNA STEAK BURGER	16	16.48	20	20.60

ADD CHEESE +1 | +1.03 • ADD BACON +3 | +3.09

PATTY MELT BURGER

ON GRILLED RYE WITH SAUTÉED ONIONS & CHEESE . . . REG. 14 | 14.42 • DLX. 17 | 17.51

SPECIAL BURGERS

SERVED WITH FRENCH FRIES

	CASH	CARD
MIRAGE BURGER - TOPPED WITH MELTED AMERICAN CHEESE & FRIED MUSHROOMS . . .	16	16.48
MEDITERRANEAN BURGER - PEPPERS, ONIONS, MUSHROOMS, & MOZZARELLA CHEESE . . .	18	18.54
UNION JACK - CRISPY BACON, CHEDDAR CHEESE, & FRIED ONIONS	18	18.54
BLACK FOREST - SWISS CHEESE, HAM, & FRIED ONIONS	18	18.54
MEXICAN BURGER - AVOCADO, RED ONION, & JALAPEÑO PEPPERS	18	18.54
GREEK BURGER - FETA CHEESE & RED ONION	18	18.54
TEXAN BURGER - HAM & EGG	18	18.54

FRANK ON A BUN

WITH SAUERKRAUT8 | 8.24

FRANK & BEANS

SERVED WITH SALAD17 | 17.51

FISH & CHIPS

BEER BATTERED COD WITH THIN-SLICED POTATOES, ONIONS, & PEPPERS 19 | 19.57

OPEN FACED SANDWICHES

ON GARLIC FRENCH BREAD • FRENCH FRIES

	CASH	CARD
GRILLED TUNA	23	23.69
BROILED FILET	26	26.78
PORTOBELLO MUSHROOMS	14	14.42
BBQ CHICKEN BREAST	18	18.54

HERO SANDWICHES

	CASH	CARD	CASH PARM	CARD PARM
CHICKEN CUTLET	13	13.39	15	15.45
VEAL CUTLET	14	14.42	16	16.48
EGGPLANT	11	11.33	13	13.39
MEATBALL OR MEATLOAF	12	12.36	14	14.42

ROUMANIAN STEAK ON GARLIC BREAD

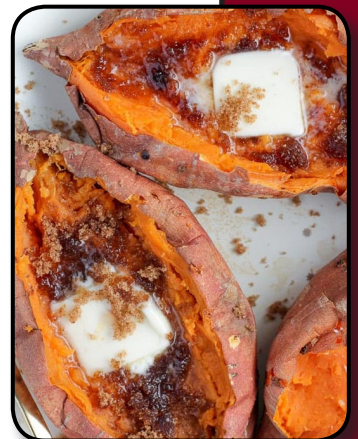
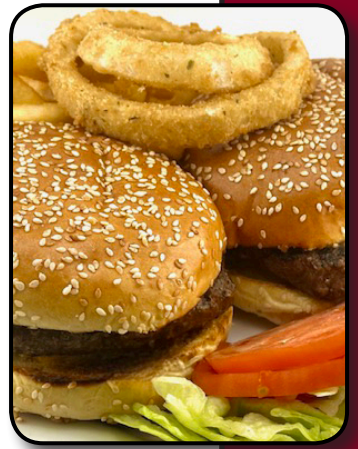
WITH FRENCH FRIES, ONION RINGS, & HOUSE SALAD 31 | 31.93

PHILLY CHEESESTEAK

WITH FRENCH FRIES & ONION RINGS 19 | 19.57

SIDES

	CASH	CARD
SAUTÉED SPINACH	13	13.39
SAUTÉED BROCCOLI	13	13.39
SAUTÉED ASPARAGUS	13	13.39
VEGETABLE OF THE DAY	6	6.18
HOUSE SALAD	9	9.27
ONION RINGS	8	8.24
BAKED POTATO	6	6.18
BAKED SWEET POTATO	6	6.18
HOME FRIED POTATOES	7	7.21
SWEET POTATO FRIES	8	8.24
CURLY FRIES	8	8.24
FRENCH FRIES	7	7.21
NOODLES & COTTAGE CHEESE	11	11.33
SCOOP OF COTTAGE CHEESE	6	6.18
COLE SLAW	6	6.18
POTATO SALAD	6	6.18
SPAGHETTI WITH MARINARA SAUCE	13	13.39
RICE PILAF	6	6.18

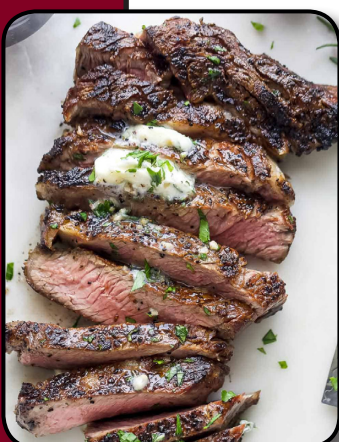


BURGERS

OPEN FACED SANDWICHES

HEROS

SIDE ORDERS



DAILY CHEF SPECIALS

**INCLUDES: SOUP & SALAD • POTATO & VEGETABLE, RICE, OR PASTA
COLE SLAW, PICKLES, BREAD & BUTTER**

**MAKE IT A COMPLETE DINNER: APPETIZER, DESSERT,
& FOUNTAIN BEVERAGE +\$7 | +\$7.21**

**APPETIZER CHOICE: STUFFED CABBAGE, CHOPPED CHICKEN LIVER,
BAKED CLAMS, STUFFED MUSHROOMS, GEFILTE FISH,
CHICKEN FINGERS, OR BUFFALO WINGS.**

MONDAY'S SPECIALS

	CASH	CARD
CHICKEN A LA KING - IN WHITE WINE SAUCE, SERVED OVER RICE	23	23.69
CHICKEN GRECO - BAKED IN GARLIC & HERBS, SERVED WITH BROWNED POTATO & VEGETABLE	26	26.78
ROAST BRISKET OF BEEF - WITH POTATO PANCAKE & VEGETABLE.	29	29.87

TUESDAY'S SPECIALS

	CASH	CARD
BAKED CHICKEN - IN HERBAL TOMATO SAUCE, SERVED OVER RICE.	26	26.78
VEAL & PEPPERS - OVER RICE.	29	29.87
ROAST BRISKET OF BEEF - WITH POTATO PANCAKE & VEGETABLE.	29	29.87

WEDNESDAY'S SPECIALS

	CASH	CARD
ROAST BRISKET OF BEEF - WITH POTATO PANCAKE & VEGETABLE.	29	29.87
BEEF GOULASH - OVER BUTTERED NOODLES	29	29.87
BROILED BEEF FLANKEN - WITH BOILED POTATO & FRESH VEGETABLES IN A POT	29	29.87

THURSDAY'S SPECIALS

	CASH	CARD
CORNED BEEF & CABBAGE - WITH BOILED POTATO	27	27.81
IRISH LAMB STEW	29	29.87
ROAST BRISKET OF BEEF - WITH POTATO PANCAKE & VEGETABLE.	29	29.87

FRIDAY'S SPECIALS

	CASH	CARD
PRIME RIB OF BEEF - AU JUS, WITH POTATO & VEGETABLE	41	42.23
BRAISED LAMB SHANK - WITH ORZO OR POTATO & VEGETABLE	28	28.84
ROASTED LEG OF LAMB - WITH MINT JELLY	28	28.84
ROASTED CHICKEN - WITH STUFFING & GRAVY OR BOILED CHICKEN IN A POT	26	26.78
BRAISED SHORT RIBS OF BEEF.	29	29.87
ROAST BRISKET OF BEEF - WITH POTATO PANCAKE & VEGETABLE.	29	29.87

SATURDAY'S SPECIALS

	CASH	CARD
BEEF GOULASH - OVER BUTTERED NOODLES	29	29.87
BRISKET OF BEEF - WITH POTATO PANCAKE & VEGETABLE.	29	29.87
PRIME RIB OF BEEF - AU JUS, WITH POTATO & VEGETABLE	41	42.23
ROASTED LEG OF LAMB - WITH MINT JELLY	29	29.87
BRAISED LAMB SHANK - WITH ORZO OR POTATO & VEGETABLE	29	29.87

SUNDAY'S SPECIALS

	CASH	CARD
ROASTED LEG OF LAMB - WITH MINT JELLY	29	29.87
PRIME RIB OF BEEF - AU JUS, WITH POTATO & VEGETABLE	41	42.23
BAKED HALF CHICKEN - IN HERBAL TOMATO SAUCE OVER RICE	26	26.78
BRAISED LAMB SHANK - WITH ORZO OR POTATO & VEGETABLE	29	29.87
ROAST BRISKET OF BEEF - WITH POTATO PANCAKE & VEGETABLE.	29	29.87

PHOTOS ARE FOR SUGGESTION ONLY • ACTUAL PLATTERS MAY APPEAR DIFFERENT
*WE RESERVE THE RIGHT TO ADD 18% GRATUITY ON CHECKS OVER \$50. THANK YOU.

LUNCH SPECIALS

MONDAY - SATURDAY 11:00 AM - 4:00 PM

INCLUDES: SOUP OR SALAD
POTATO, VEGETABLE, RICE, OR PASTA
CHOICE OF DESSERT, & FOUNTAIN BEVERAGE

MONDAY

	CASH	CARD
CHICKEN A LA KING	19	19.57
CHICKEN GRECO	22	22.66

TUESDAY

	CASH	CARD
BAKED CHICKEN	22	22.66
VEAL & PEPPERS	24	24.72

WEDNESDAY

	CASH	CARD
BEEF GOULASH WITH NOODLES	24	24.72
BOILED BEEF	24	24.72

THURSDAY

	CASH	CARD
IRISH LAMB STEW	24	24.72
CORNERED BEEF & CABBAGE	23	23.69

FRIDAY

	CASH	CARD
LEG OF LAMB	24	24.72
BRAISED LAMB SHANK WITH ORZO	24	24.72

SATURDAY

	CASH	CARD
BEEF GOULASH WITH NOODLES	24	24.72
BRAISED LAMB SHANK WITH ORZO	24	24.72
LEG OF LAMB	24	24.72

SPECIALS

	CASH	CARD
BRISKET OF BEEF	24	24.72
MEAT LOAF	19	19.57
TURKEY MEATLOAF	19	19.57
STUFFED CABBAGE	19	19.57
FRANKS & BEANS	19	19.57

POULTRY

	CASH	CARD
CHICKEN BREAST FRANCAISE	23	23.69
CHICKEN PARMIGIANA	23	23.69
CHICKEN PRIMAVERA	23	23.69
HOT OPEN TURKEY	23	23.69
ROAST CHICKEN	23	23.69

VEGETARIAN

	CASH	CARD
VEGETABLE PRIMAVERA	20	20.60
EGGPLANT PARMIGIANA	20	20.60
SPINACH PIE WITH ARTICHOKE HEARTS	20	20.60

SEAFOOD

	CASH	CARD
SHRIMP SCAMPI OVER RICE	25	25.75
BROILED FILET OF LEMON SOLE	28	28.84
SALMON	25	25.75
BLUE FISH	20	20.60
BOSTON SCROD	23	23.69
SEAFOOD AU GRATIN	19	19.57
STUFFED FILET - SPINACH & FETA CHEESE OR CRABMEAT	29	29.87
BROILED TILAPIA	19	19.57
ORANGE ROUGHY	19	19.57

MEATS

	CASH	CARD
CHOPPED STEAK WITH ONIONS	23	23.69
HOT OPEN TOP SIRLOIN OF BEEF	23	23.69
CALVES LIVER, SAUTÉED	23	23.69

SOUP & SANDWICH

SERVED ONLY WITH SOUP & FOUNTAIN BEVERAGE

	CASH	CARD
BRISKET	24	24.72
CORNERED BEEF	23	23.69
PASTRAMI	24	24.72
TURKEY	23	23.69
TUNA	17	17.51
CHICKEN	15	15.45
EGG SALAD	14	14.42
SHRIMP SALAD	18	18.54

JR. SALADS

SERVED ONLY WITH SOUP & FOUNTAIN BEVERAGE

	CASH	CARD
TUNA OR CHICKEN SALAD	17	17.51
SHRIMP SALAD	18	18.54
EGG SALAD	15	15.45

DINE IN ONLY

FOUR COURSE DINNER SPECIALS

CASH **\$35** CARD **\$36.05**

APPETIZER

**BAKED CLAMS, STUFFED MUSHROOMS,
CHICKEN FINGERS, OR BUFFALO WINGS**

SOUP OR SALAD

ENTREE

**SERVED WITH POTATO & VEGETABLE
COLE SLAW, PICKLES, BREAD & BUTTER**

FROM THE SEA

BROILED NORWEGIAN SALMON

LIGHTLY BLACKENED

TILAPIA

BROILED & SEASONED

RED SNAPPER

BROILED WITH OLIVE OIL & LEMON SAUCE

ORANGE ROUGHY

BROILED, CAJUN STYLE

BABY BLUE FISH

BROILED & SEASONED

BROILED STUFFED FILET

WITH CRABMEAT OR SPINACH & FETA (1 PIECE)

SEAFOOD AU GRATIN

SERVED OVER A BED OF RICE

STUFFED MUSHROOMS & CLAMS

SERVED OVER A BED OF RICE OR POTATO & VEGETABLE

CHARCOAL BROILED TUNA STEAK

SERVED OVER A BED OF RICE, TOPPED WITH ONIONS & MUSHROOMS

FROM THE LAND

PRIME FILET MIGNON (10 OZ.)

SERVED WITH MUSHROOM CAPS & ONION RINGS

BROILED CHOPPED STEAK

SERVED WITH MUSHROOMS & ONIONS

SAUTÉED CALVES LIVER

WITH ONIONS AND/OR BACON

BROILED SIRLOIN STEAK (10 OZ.)

BROILED TO YOUR LIKING

CHICKEN PARMIGIANA

SERVED WITH LINGUINI OR FETTUCCHINE ALFREDO

BROILED HALF CHICKEN, GREEK STYLE

TOPPED WITH LEMON, OREGANO, & GARLIC

SAUTÉED CHICKEN SCAMPI

SERVED WITH LINGUINE OR POTATO & VEGETABLE

BARBECUE CHICKEN & RIBS

MADE ON THE CHARCOAL

BROILED SINGLE VEAL CHOP

TOPPED WITH PEPPERS & ONIONS

VEAL SORRENTINO

TOPPED WITH FRESH TOMATO SAUCE & MOZZARELLA CHEESE

VEAL PARMIGIANA

SERVED WITH LINGUINE OR FETTUCCHINE ALFREDO

PASTA

PENNE ALA VODKA

IN A CREAMY TOMATO-VODKA SAUCE

PENNE BROCCOLI

WITH SUN-DRIED TOMATOES & BROCCOLI

ANGEL HAIR PRIMAVERA

WITH BROCCOLI, CARROTS, ZUCCHINI, CAULIFLOWER, OLIVE OIL, & GARLIC

BAKED ZITI

WITH A FRESH TOMATO SAUCE, TOPPED WITH MOZZARELLA

PENNE A LA MIRAGE

WITH CHICKEN & BROCCOLI

FETTUCCHINE ALFREDO

WITH NOVA LOX & GREEN PEAS

CHOICE OF HOMEMADE DESSERT

STRAWBERRY CHEESECAKE OR YOGURT +3 | +3.09

ALA MODE +3 | +3.09



- SELECT ONE FROM EACH COURSE •
- FOUR COURSE DINNER SPECIAL MAY BE SHARED WITH ONE GUEST FOR AN ADDITIONAL +6 | +6.18, APPLICABLE TOWARD ANY MENU ITEM •
- DINE IN ONLY • NO SUBSTITUTIONS PLEASE •

INTERNATIONAL KITCHEN

**INCLUDES: SOUP & SALAD • POTATO & VEGETABLE, RICE, OR PASTA
COLE SLAW, PICKLES, BREAD & BUTTER**

**MAKE IT A COMPLETE DINNER: APPETIZER, DESSERT,
& FOUNTAIN BEVERAGE +\$7 | +\$7.21**

**APPETIZER CHOICE: STUFFED CABBAGE, CHOPPED CHICKEN LIVER,
BAKED CLAMS, STUFFED MUSHROOMS, GEFILTE FISH,
CHICKEN FINGERS, OR BUFFALO WINGS.**

ITALIAN SPECIALTIES

	CASH	CARD
VEAL PARMIGIANA	29	29.87
CHICKEN PARMIGIANA	28	28.84
SHRIMP PARMIGIANA	35	36.05
EGGPLANT PARMIGIANA	25	25.75
EGGPLANT ROLLATINI - WITH RICOTTA CHEESE	27	27.81
GRILLED CHICKEN PARMIGIANA - WITH LOW-FAT MOZZARELLA CHEESE	28	28.84

SORRENTO (FOR TWO)

TWO SHRIMP, TWO VEAL, TWO CHICKEN, & TWO EGGPLANT ROLLATINI WITH RICOTTA CHEESE,
SERVED WITH SPAGHETTI & TWO SALADS44 | 45.32

PASTAS

SERVED WITH SOUP OR SALAD

	CASH	CARD
PENNE ALA VODKA	22	22.66
FETTUCINE ALFREDO	24	24.72
RAVIOLI WITH FRESH MARINARA	22	22.66
BAKED ZITI WITH MOZZARELLA	24	24.72
PASTA PRIMAVERA	23	23.69
MAMA'S ANGEL HAIR PASTA WITH BABY SPINACH & SHRIMP	33	33.99
SPAGHETTI MARINARA	20	20.60
SPAGHETTI WITH MEATBALLS OR MEAT SAUCE	25	25.75
PENNE WITH TOMATO SAUCE & GARLIC OR WITH SAUTÉED BROCCOLI & SUN-DRIED TOMATO	24	24.72
PENNE BOLOGNESE WITH MEAT SAUCE	27	27.81
LINGUINE WITH CLAM SAUCE - RED OR WHITE	29	29.87

CHICKEN +8 | +8.24 • STEAK +12 | +12.36 • SHRIMP +12 | +12.36
SUBSTITUTE WHOLE WHEAT PASTA +2 | +2.06

GLUTEN FREE PENNE PASTA

PRIMAVERA OR FRESH TOMATO SAUCE24 | 24.72

GREEK SPECIALTIES

SERVED ON A PITA WITH FRENCH FRIES

	CASH	CARD
BEEF SOUVLAKI - MARINATED BEEF TIPS, ONIONS, PEPPERS, & TZATSIKI SAUCE	18	18.54
CHICKEN SOUVLAKI - CHUNKS OF WHITE MEAT CHICKEN, ONIONS, TOMATOES, PEPPERS, & TZATSIKI SAUCE	17	17.51
BEEF GYRO PLATTER - GREEK SALAD & TZATSIKI SAUCE	16	16.48

MEXICAN SPECIALTIES

TOSTADAS CASH CARD
BLACK BEANS, LETTUCE, TOMATO, MEXICAN & CHEDDAR CHEESE, & SOUR CREAM, ON TORTILLA **15 15.45**

TACOS DORADOS CASH CARD
WITH CHEESE, BLACK BEANS, & SOUR CREAM **15 15.45**

NACHOS CASH CARD
WITH CHOPPED MEAT, MONTEREY JACK & CHEDDAR CHEESE, JALAPEÑOS, TOMATOES,
ONIONS, & GUACAMOLE **16 16.48**

QUESADILLAS CASH CARD

CHEESE QUESADILLA - MONTEREY JACK & CHEDDAR CHEESE **11 11.33**

VEGGIE QUESADILLA - CHEESE, SPINACH, BROCCOLI, ZUCCHINI, & TOMATO **12 12.36**

MIRAGE QUESADILLA - CHEESE, GRILLED CHICKEN, MUSHROOMS, & ONIONS **16 16.48**

MEXICAN QUESADILLA - CHEESE, GRILLED CHICKEN, AVOCADO, CORN, RED ONION, & TOMATO **16 16.48**

BBQ QUESADILLA - CHEESE, BBQ GRILLED CHICKEN & GREEN PEPPERS **16 16.48**

QUESADILLA PARMIGIANA - CHEESE, CHICKEN CUTLET & MARINARA SAUCE **16 16.48**

SHRIMP QUESADILLA - CHEESE, BROCCOLI & RED PEPPERS **17 17.51**

STEAK QUESADILLA - CHEESE, LONDON BROIL, ONIONS, & PEPPERS **20 20.60**

JALAPEÑOS +1 | +1.03 • ADD FRENCH FRIES +4 | +4.12 • ADD SALAD +6 | +6.18

THIN CRUST PIZZA

PLAIN CHEESE 13 | 13.39

PEPPERS, RED ONIONS, & MUSHROOMS 14 | 14.42

ADD CAULIFLOWER +2 | +2.06 • OR CREATE YOUR OWN! (3 TOPPINGS)



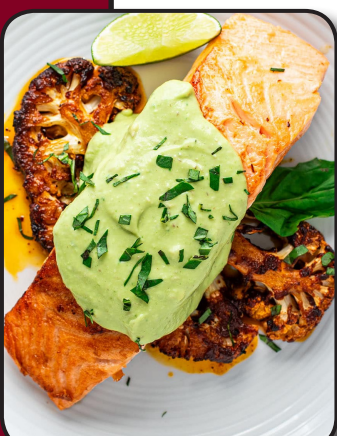
ITALIAN SPECIALTIES

PASTA

GREEK

MEXICAN

PIZZA



SAUTEES

**INCLUDES: SOUP & SALAD • POTATO & VEGETABLE, RICE, OR PASTA
COLE SLAW, PICKLES, BREAD & BUTTER**

**MAKE IT A COMPLETE DINNER: APPETIZER, DESSERT,
& FOUNTAIN BEVERAGE +\$7 | +\$7.21**

**APPETIZER CHOICE: STUFFED CABBAGE, CHOPPED CHICKEN LIVER,
BAKED CLAMS, STUFFED MUSHROOMS, GEFILTE FISH,
CHICKEN FINGERS, OR BUFFALO WINGS.**

POULTRY

	CASH	CARD
1. CHICKEN VICTORIA - WITH MUSHROOMS, BROCCOLI, ONIONS, & DIJON MUSTARD	29	29.87
2. CHICKEN CASINO - WITH PEPPERS, ONIONS, MUSHROOMS, & GARLIC, WITH OREGANATO BREADCRUMBS	29	29.87
3. CHICKEN SCAMPI STYLE	29	29.87
4. CHICKEN SANTORINI - WITH MUSHROOMS, PEPPERS, & TOMATO SAUCE, BAKED WITH FETA CHEESE .	29	29.87
5. CHICKEN BREAST LAS VEGAS - WITH BROCCOLI & MOZZARELLA CHEESE IN A GARLIC SAUCE .	29	29.87
6. CHICKEN ROLLATINI - WITH SPINACH, MUSHROOMS, & PIMENTOS IN A LIGHT WINE SAUCE	29	29.87
7. CHICKEN NAPOLITANA - WITH ARTICHOKE, PIMENTO, MUSHROOMS, BLACK OLIVES, & WHITE WINE .	29	29.87
8. CHICKEN BREAST MARSALA OR FRANCAISE	29	29.87
9. CHICKEN & MUSHROOMS - IN A BURGUNDY WINE SAUCE	29	29.87
10. CHICKEN MIMOSA - WITH FRESH SPINACH & MUSHROOMS IN A FRESH LEMON SAUCE	29	29.87
11. CHICKEN SORRENTINO - WITH FRESH TOMATO SAUCE & MOZZARELLA CHEESE OVER PASTA .	29	29.87
12. CHICKEN CORDON BLEU - HAM & SWISS CHEESE	30	30.90

STIR-FRIED CHICKEN

WITH STIR-FRIED VEGETABLES IN SOY SAUCE, OVER RICE 28 | 28.84

VEAL

	CASH	CARD
1. VEAL OSCAR - WITH ASPARAGUS & ARTICHOKE HEARTS IN A LIGHT BUTTER & LEMON SAUCE . . .	29	29.87
2. VEAL FRANCAISE OR MARSALA	29	29.87
3. VEAL ROLLATINI CORDON BLEU - HAM & SWISS CHEESE	30	30.90
4. VEAL ROLLATINI FRANCAISE	30	30.90
5. VEAL ROLLATINI MARSALA	30	30.90
6. VEAL PICCATA - SAUTÉED WITH WHITE WINE, LEMON, & MUSHROOMS	29	29.87
7. VEAL SORRENTINO - WITH FRESH TOMATO SAUCE & MOZZARELLA CHEESE OVER LINGUINE	29	29.87

VEAL SPECIAL

WITH EGGPLANT, HAM, & MOZZARELLA CHEESE IN A LIGHT BUTTER LEMON SAUCE 29 | 29.87

FISH & SEAFOOD

	CASH	CARD
1. FILET OF SOLE FRANCAISE OR SCAMPI	39	40.17
2. FILET OF SOLE - WITH A LIGHT MUSHROOM, OREGANO, & LEMON SAUCE (SUTTON STYLE)	39	40.17
3. POACHED OR GRILLED SALMON - OVER MIXED GREEN VEGETABLES	36	37.08
4. PAN BLACKENED SALMON - OVER STIR-FRIED VEGETABLES, PASTA, OR RICE	36	37.08
5. SHRIMP & ANGEL HAIR PASTA - WITH MUSHROOMS, PEAS, & ONIONS IN GARLIC SAUCE	35	36.05
6. TRIPLE SCAMPI - SHRIMP, SCALLOPS, & CHICKEN BREAST OVER LINGUINE	38	39.14
7. SEAFOOD FRA DIAVOLO - WITH LOBSTER TAIL, SHRIMP, SCALLOPS, MUSSELS, & CLAMS OVER LINGUINE	42	43.26
8. SHRIMP SCAMPI	36	37.08

SALMON, CALIFORNIA STYLE

WITH DILL & AVOCADO SAUCE 39 | 40.17

PHOTOS ARE FOR SUGGESTION ONLY • ACTUAL PLATTERS MAY APPEAR DIFFERENT
*WE RESERVE THE RIGHT TO ADD 18% GRATUITY ON CHECKS OVER \$50. THANK YOU.

SEAFOOD

**INCLUDES: SOUP & SALAD • POTATO & VEGETABLE, RICE, OR PASTA
COLE SLAW, PICKLES, BREAD & BUTTER**

**MAKE IT A COMPLETE DINNER: APPETIZER, DESSERT,
& FOUNTAIN BEVERAGE +\$7 | +\$7.21**

**APPETIZER CHOICE: STUFFED CABBAGE, CHOPPED CHICKEN LIVER,
BAKED CLAMS, STUFFED MUSHROOMS, GEFILTE FISH,
CHICKEN FINGERS, OR BUFFALO WINGS.**

BROILED

	CASH	CARD
GROUPEL	34	35.02
CHILEAN SEA BASS	45	46.35
FAROE ISLAND SALMON	35	36.05
BROILED LEMON SOLE FILET	38	39.14
STUFFED FILET OF SOLE WITH CRABMEAT OR SPINACH & FETA	40	41.20
BROILED BLUE FISH	25	25.75
BROILED BOSTON SCROD	32	32.96
BROILED YELLOWFIN TUNA	35	36.05
BROILED EASTERN HALIBUT	42	43.26
RED SNAPPER FILET	30	30.90
BROILED SEA SCALLOPS	39	40.17
BROILED JUMBO SHRIMP - SCAMPI STYLE	35	36.05
JUMBO STUFFED SHRIMP WITH CRABMEAT	39	40.17
TILAPIA	30	30.90
ORANGE ROUGHY	30	30.90
CHAR-BROILED WHOLE BRANZINO - (IN SEASON)	35	36.05

FRIED

	CASH	CARD
FRIED FILET OF SOLE	37	38.11
FRIED SHRIMP	34	35.02
FRIED SCALLOPS	38	39.14
FRIED SEAFOOD COMBINATION - SCALLOPS, SHRIMP, & FILET	40	41.20
STUFFED WITH CRABMEAT +6 +6.18 BLACKENED, ALMONDINE, OR OREGANATO +3 +3.09		

SOUTH AFRICAN LOBSTER TAILS

TWO, 7 OZ. EACH	68	70.04
WITH CRABMEAT STUFFING	73	75.19

SEAFOOD

	CASH	CARD
HIBACHI SHRIMP - WITH BROCCOLI, CAULIFLOWER, CARROTS, ONIONS, PEPPERS, & TERIYAKI SAUCE	39	40.17
STUFFED MUSHROOMS SCAMPI STYLE	27	27.81
SEAFOOD AU GRATIN - SALMON, SCROD, HALIBUT, SHRIMP, & CHEESE	24	24.72
STUFFED SALMON WITH CRABMEAT	39	40.17
SALMON & SHRIMP SCAMPI STYLE - OVER RICE	39	40.17

COMBINATIONS

	CASH	CARD
SEVEN SEAS SPECIAL - STUFFED LOBSTER TAIL & STUFFED SHRIMP WITH CRABMEAT STUFFING, FILET FLORENTINE (SPINACH & FETA CHEESE), & BAKED STUFFED CLAM	42	43.26
MIRAGE SPECIAL SURF & TURF - BROILED FILET MIGNON, LOBSTER TAIL, STUFFED SHRIMP, & STUFFED TOMATO	42	43.26
CAPTAIN'S PLATTER - BROILED LOBSTER TAIL, SHRIMP, HALIBUT, ALASKAN KING CRAB LEGS, & STUFFED CLAMS	42	43.26
FILET MIGNON WITH LOBSTER TAILS - TWO, 3 OZ. TAILS	42	43.26
SEAFOOD KEBAB - SHRIMP, SCALLOPS, & LOBSTER GRILLED WITH ONIONS, TOMATOES, & MUSHROOMS OVER RICE	40	41.20
LAND & SEA - ROUMANIAN STEAK, TWO STUFFED SHRIMP, & TWO BAKED CLAMS	40	41.20
BROILED SEAFOOD COMBINATION - FILET, SHRIMP, SCALLOPS, HALIBUT, & BAKED CLAMS	41	42.23

TUNA A LA MIRAGE

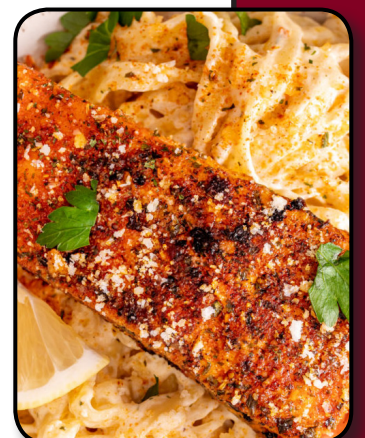
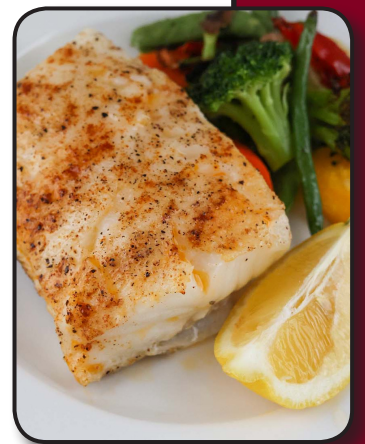
MESQUITE-STYLE, WITH CRISP ONIONS & MUSHROOMS, SERVED OVER RICE	39	40.17
---	----	-------

GRILLED SALMON A LA MIRAGE

CAPERS, OLIVES, SCALLIONS, FRESH TOMATO SAUCE, & GARLIC, SERVED OVER LINGUINE	39	40.17
---	----	-------

A LA CARTE SERVED WITH POTATO OR VEGETABLE

SEAFOOD	CASH	CARD
NORWEGIAN SALMON	28	28.84
BROILED FILET OF SOLE	31	31.93
RED SNAPPER	24	24.72
SEA SCALLOPS	33	33.99
JUMBO SHRIMP	29	29.87



BROILED SEAFOOD

FRIED SEAFOOD

SEAFOOD

SEAFOOD COMBINATIONS



FROM THE LAND

**INCLUDES: SOUP & SALAD • POTATO & VEGETABLE, RICE, OR PASTA
COLE SLAW, PICKLES, BREAD & BUTTER**

**MAKE IT A COMPLETE DINNER: APPETIZER, DESSERT,
& FOUNTAIN BEVERAGE +\$7 | +\$7.21**

**APPETIZER CHOICE: STUFFED CABBAGE, CHOPPED CHICKEN LIVER,
BAKED CLAMS, STUFFED MUSHROOMS, GEFILTE FISH,
CHICKEN FINGERS, OR BUFFALO WINGS.**

POULTRY

	CASH	CARD
ROAST MARYLAND TURKEY	27	27.81
BROILED HALF CHICKEN	27	27.81
ROAST LONG ISLAND DUCKLING - WITH CHAMPAGNE FRUIT SAUCE	31	31.93
GRILLED BONELESS CHICKEN	27	27.81
TURKEY CHOPPED STEAK	26	26.78
ROAST CHICKEN	26	26.78

STEAKS & CHOPS

	CASH	CARD
BROILED N.Y. STRIP STEAK	40	41.20
BROILED RIB STEAK	41	42.23
BROILED ROUMANIAN STEAK	40	41.20
BROILED PRIME LONDON BROIL	39	40.17
BROILED VEAL CHOPS - (À LA NATURELLE PLAIN)	39	40.17
BROILED LAMB CHOPS (4)	39	40.17
BROILED CENTER CUT PORK CHOPS	33	33.99
BABY BACK RIBS	31	31.93
CALVES LIVER - WITH BACON OR ONIONS	29	29.87
VIRGINIA HAM STEAK - HAWAIIAN STYLE	27	27.81
CHOPPED STEAK	27	27.81

PRIME FILET MIGNON

SERVED WITH MUSHROOM CAPS & ONION RINGS40 | 41.20

T-BONE STEAK

SERVED WITH MUSHROOM CAPS & ONION RINGS42 | 43.26

48 oz. PORTERHOUSE STEAK (FOR TWO)

EXTRA CUT WITH GRILLED ONIONS & MUSHROOMS. SERVED WITH VEGETABLE & 2 SALADS. CHOICE OF HASH BROWNS, FRENCH FRIES, OR BAKED POTATO85 | 87.55

COMBINATIONS

	CASH	CARD
1. ROUMANIAN STEAK & TWO STUFFED MUSHROOMS	36	37.08
2. ROUMANIAN STEAK & STUFFED CHICKEN BREAST FLORENTINE	36	37.08
3. ROUMANIAN STEAK & THREE FRIED SHRIMP	38	39.14
4. B.B.Q. CHICKEN & HALF RACK OF RIBS	35	36.05
5. SHRIMP & CHICKEN BREAST - CHOICE OF SCAMPI OR FRANCAISE STYLE	35	36.05
6. SHRIMP & CHICKEN A LA MIRAGE - WITH STIR-FRIED VEGETABLES, OVER RICE	36	37.08
7. SEAFOOD & CHICKEN TERIYAKI - WITH STIR-FRIED VEGETABLES, OVER RICE	36	37.08
8. MIXED GRILL - VEAL CHOP, LAMB CHOP, & PORK CHOP	42	43.26

HOUSE SPECIALS

	CASH	CARD
ROAST CHICKEN	26	26.78
TURKEY MEAT LOAF	24	24.72
MEAT LOAF	24	24.72
STUFFED CABBAGE	23	23.69
MARINATED GRILLED BREAST OF CHICKEN - WITH EGGPLANT & ZUCCHINI	28	28.84
CHICKEN KEBAB OVER RICE - WITH VEGETABLE & GARNISH	30	30.90
RIBS & BBQ CHICKEN	33	33.99
SPINACH PIE - WITH STUFFED ARTICHOKE, MUSHROOMS, & GREEK SALAD	25	25.75
BRISKET OF BEEF - WITH POTATO PANCAKE & VEGETABLE	29	29.87
CALVES LIVER - SAUTÉED WITH BACON & ONIONS	29	29.87

A LA CARTE SERVED WITH POTATO OR VEGETABLE

	CASH	CARD
POULTRY		
ROAST MARYLAND TURKEY	21	21.63
HALF CHICKEN	21	21.63
GRILLED CHICKEN	21	21.63
ROAST CHICKEN	20	20.60
LAND		
NY STRIP STEAK	35	36.05
RIB STEAK	35	36.05
ROMANIAN STEAK	34	35.02
VEAL CHOPS	33	33.99
LAMB CHOPS	33	33.99
PORK CHOP (CENTER CUT)	27	27.81

ALL MEATS ARE ANGUS BEEF



BREAKFAST

FRUITS • JUICES

	CASH	CARD
JUICES 10 OZ. - ORANGE, TOMATO, PINEAPPLE, GRAPEFRUIT, WELCH'S GRAPE, OR PRUNE	5	5.15
JUICES 16 OZ. - ORANGE, TOMATO, PINEAPPLE, GRAPEFRUIT, WELCH'S GRAPE, OR PRUNE	7	7.21
HALF GRAPEFRUIT - IN SEASON	5	5.15
BANANAS OR STRAWBERRIES WITH SOUR CREAM OR WHIPPED CREAM	13	13.39
COTTAGE CHEESE +4 +4.12		

FRUIT SALAD OR MELON

FRESH FRUIT SALAD	6	6.18
MELON - IN SEASON	6	6.18



GREEK YOGURT

PLAIN	8	8.24
WITH HONEY & GRANOLA	11	11.33
ADD PINEAPPLE, BANANA, OR STRAWBERRIES	+2	+2.06

FROM THE GRIDDLE

	CASH	CARD
PANCAKES	11	11.33
DELUXE - WITH BACON, HAM, SAUSAGE, & ONE EGG	17	17.51
CHOCOLATE CHIP PANCAKES	13	13.39
SILVER DOLLARS	13	13.39
SUGAR FREE WHOLE WHEAT PANCAKES	12	12.36
CHALLAH OR OLD-FASHIONED FRENCH TOAST	12	12.36
CHALLAH FRENCH TOAST SANDWICH - WITH BACON, EGGS, & CHEESE	16	16.48
CHALLAH FRENCH TOAST SANDWICH - WITH PEANUT BUTTER & BANANAS OR NUTELLA & BANANAS	16	16.48
BELGIAN WAFFLES	14	14.42
WHOLE WHEAT BELGIAN WAFFLES	13	13.39
BACON, HAM, SAUSAGE, TURKEY BACON, OR TURKEY SAUSAGE +4 +4.12 TWO EGGS +4 +4.12 • FRESH FRUIT +4 +4.12 PRESERVES +3 +3.09 • ICE CREAM +5 +5.15		

AMANDA & JOYCE'S AVOCADO TOAST

TOMATO, AVOCADO OR GUACAMOLE, HARD-BOILED EGG WHITE, & BALSAMIC VINEGAR ON WHOLE GRAIN TOAST 13 | 13.39

EGG SANDWICHES

	CASH	CARD
TWO EGG SANDWICH	8	8.24
WITH CHEESE	9	9.27
WITH BACON	10	10.30
WITH CHEESE & BACON	11	11.33
SUBSTITUTE TOAST WITH A BAGEL, BIALY, WHOLE GRAIN BREAD, CORN, OR BRAN MUFFIN +1 +1.03		

EGGS BENEDICT

TWO POACHED EGGS, NOVA SCOTIA LOX OR CANADIAN BACON, ENGLISH MUFFIN, & HOLLANDAISE SAUCE 18 | 18.54

BREAKFAST WRAPS

CHOICE OF SPINACH OR WHOLE WHEAT WRAP SERVED WITH HOME FRIES

	CASH	CARD
1. EGGS, MUSHROOMS, SCALLIONS, & SWISS CHEESE	13	13.39
2. EGGS, BROCCOLI, SAUTÉED ONIONS, TOMATOES, & CHEDDAR CHEESE	13	13.39
3. EGGS, TOMATOES, ONIONS, & CHEDDAR CHEESE	13	13.39
4. EGGS, SPINACH, ONIONS, & MOZZARELLA	13	13.39
5. EGGS, ZUCCHINI, PEPPERS, ONIONS, & CHEDDAR	13	13.39
CURLY, SWEET POTATO FRIES, VEGETABLE, OR LETTUCE & TOMATO +2 +2.06 BACON, HAM, SAUSAGE, TURKEY BACON, OR TURKEY SAUSAGE +4 +4.12		

HUEVOS RANCHEROS

BLACK BEANS, AVOCADO, SALSA, TORTILLA, & HOME FRIES .. 17 | 17.51

SIDE ORDERS

	CASH	CARD
BACON, HAM, OR SAUSAGE	5	5.15
TURKEY BACON OR TURKEY SAUSAGE	6	6.18

TRY ONE OF OUR REFRESHING BREAKFAST COCKTAILS!

CHAMPAGNE, MIMOSA, BELLINI, OR BLOODY MARY 11 | 11.33
APEROL SPRITZ 12 | 12.36

MUFFIN • DANISH • TOAST

	CASH	CARD
TOASTED CORN OR BRAN MUFFIN	4	4.12
NON-FAT MUFFIN	4	4.12
ASSORTED DANISH	5	5.15
GOLDEN BROWN TOAST, ROLL, OR ENGLISH MUFFIN WITH BUTTER & JELLY	3	3.09

CEREALS

HOMEMADE GRITS	6	6.18
HOT CEREAL	6	6.18
COLD CEREAL	6	6.18
GRANOLA, RAISINS, WALNUTS, OR CRANBERRIES +2 +2.06 BANANA, STRAWBERRIES, OR BLUEBERRIES +3 +3.09		

BAGELS • BIALYS • ROLLS

	CASH	CARD
BAGEL, BIALY, OR ROLL	3	3.09
WITH CREAM CHEESE	6	6.18
WITH NOVA SCOTIA LOX	16	16.48
WITH NOVA SCOTIA LOX & CREAM CHEESE	17	17.51
LOX SLICES (3)	12	12.36

BAGEL ALL THE WAY

NOVA SCOTIA LOX, CREAM CHEESE, LETTUCE, TOMATO, OLIVES, & BERMUDA ONION 19 | 19.57

BAGEL PLATTER

NOVA SCOTIA LOX, CREAM CHEESE, LETTUCE, TOMATO, OLIVES, & BERMUDA ONION 41 | 42.23

EGGS • OMELETTES

SERVED WITH HOME FRIES, TOAST, & BUTTER

	CASH	CARD
TWO EGGS - ANY STYLE	10	10.30
TWO EGGS - WITH BACON, HAM, SAUSAGE, OR CANADIAN BACON	12	12.36
CORNED BEEF HASH & EGGS	15	15.45
VIRGINIA HAM, STEAK, & EGGS	25	25.75
ROUMANIAN STEAK & EGGS	31	31.93
AMERICAN, SWISS, OR MOZZARELLA OMELETTE	14	14.42
BACON, HAM, OR SAUSAGE OMELETTE	15	15.45
WESTERN OMELETTE	15	15.45
SPANISH OMELETTE	15	15.45
FETA & SPINACH OMELETTE	15	15.45

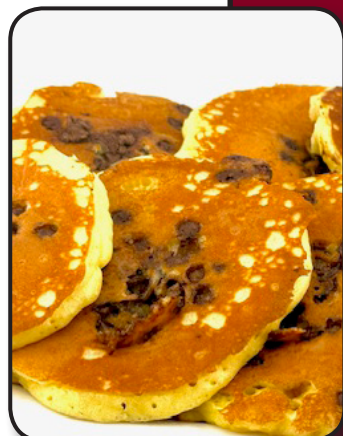
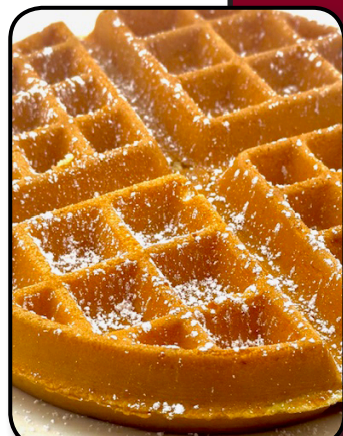
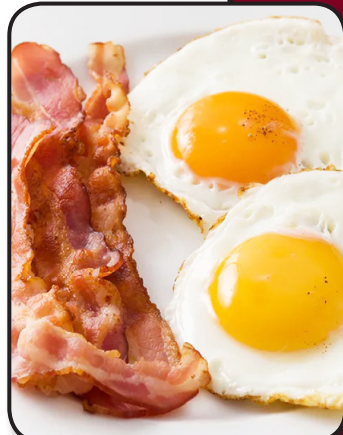
SPECIAL 3 EGG OMELETTES

	CASH	CARD
AMERICAN, SWISS, OR MOZZARELLA OMELETTE	15	15.45
SPANISH OR WESTERN OMELETTE	15	15.45
NOVA SCOTIA LOX - ONIONS	17	17.51
ITALIAN OMELETTE - SAUSAGE, POTATO, ONION, & MOZZARELLA	16	16.48
GREEK OMELETTE - FETA, TOMATO, & ONIONS	15	15.45
GARDEN OMELETTE - TOMATO, MUSHROOMS, ONIONS, & PEPPERS	16	16.48
FARMER'S OMELETTE - BROCCOLI, ZUCCHINI, CHEDDAR, & BACON	17	17.51
CALIFORNIA OMELETTE - CHEDDAR, AVOCADO, BACON, TOMATO, & OLIVES	17	17.51
SPINACH & FETA CHEESE OMELETTE	16	16.48
MIXED GRILL OMELETTE - BACON, HAM, & SAUSAGE	16	16.48

CURLY, SWEET POTATO FRIES, VEGETABLE, OR LETTUCE & TOMATO +2 | +2.06
BACON, HAM, SAUSAGE, TURKEY BACON, OR TURKEY SAUSAGE +4 | +4.12
BAGEL, BIALY, CORN, OR BRAN MUFFIN +1 | +1.03
PUT IT IN A WRAP +1 | +1.03

CREATE YOUR OMELETTE

PEPPERS • SCALLIONS • SPINACH • MUSHROOMS
ONIONS • CAULIFLOWER • TOMATO • PARSLEY
BROCCOLI • ZUCCHINI
12 | 12.36
EACH VEGETABLE +1 | +1.09
CHOICE OF CHEESE +2 | +2.06
BACON, HAM, OR SAUSAGE +4 | +4.12
TURKEY BACON OR TURKEY SAUSAGE +4 | +4.12



GRIDDLE

EGGS & OMELETTES

FRUITS & JUICES

BAGELS

WRAPS

DESSERTS



BEVERAGES



COFFEES



FOUNTAIN



YOGURT



DESSERTS

SUGAR FREE & FAT FREE CAKES ARE AVAILABLE, PLEASE ASK YOUR SERVER

	CASH	CARD
CREAMY CHEESECAKE OR CHOCOLATE CHEESECAKE	8	8.24
STRAWBERRY CHEESECAKE	10	10.30
DIET MARBLE CHEESECAKE	7	7.21
CARROT CAKE OR STRAWBERRY SHORTCAKE	8	8.24
7-LAYER, CHOCOLATE LAYER, OR DOUBLE CHOCOLATE FUDGE CAKE	8	8.24
BLACK FOREST OR CHOCOLATE MOUSSE CAKE	8	8.24
APPLE CRUMB OR BLUEBERRY CRUMB CAKE	8	8.24
COCONUT CUSTARD OR LEMON MERINGUE PIE	8	8.24
PECAN PIE	8	8.24
BLUEBERRY, APPLE, OR SUGAR-FREE APPLE PIE	8	8.24
PIE A LA MODE	11	11.33
BAKED APPLE	6	6.18
CHOCOLATE, RICE, OR BREAD PUDDING	5	5.15
NAPOLEON OR ECLAIR	7	7.21
PLAIN OR MARBLE POUND CAKE	5	5.15
ALMOND OR CHOCOLATE HORN	5	5.15
PRUNE OR RASPBERRY HAMANTASCHEN	5	5.15
RASPBERRY LINZER TART	5	5.15
BLACK & WHITE OR CHOCOLATE CHIP COOKIES	5	5.15
BROWNIE	7	7.21
RAINBOW BARS	6	6.18
JELLO OR SUGAR-FREE JELLO	4	4.12
RUGALACH - (PRICED PER PIECE)	2	2.06

ALA MODE +3

YOU MAY ALSO BRING YOUR OWN BIRTHDAY CAKE FOR A CAKE-CUTTING FEE OF 15 | 15.45

BEVERAGES

	CASH	CARD
COFFEE OR TEA	3	3.09
BREWED DECAF COFFEE	3	3.09
HERBAL TEAS	3	3.09
HOT CHOCOLATE & WHIPPED CREAM	5	5.15
MILK	4	4.12
CHOCOLATE MILK	5	5.15
ICED TEA - (SWEETENED OR UNSWEETENED)	3	3.09
ICED COFFEE	5	5.15
WHIPPED ICED COFFEE	6	6.18
FOUNTAIN SODA (ONE FREE REFILL)	4	4.12
LIME RICKEY	4	4.12
SHIRLEY TEMPLE	4	4.12
BOTTLED WATER	2	2.06
PERRIER OR PELLEGRINO (SMALL)	5	5.15
PERRIER OR PELLEGRINO (LARGE)	11	11.33
SNAPPLE	4	4.12

SPECIALTY COFFEES

	CASH	CARD
ESPRESSO	4	4.12
RED EYE - 1 SHOT OF ESPRESSO WITH AMERICAN COFFEE	5	5.15
BLACK EYE - 2 SHOTS OF ESPRESSO WITH AMERICAN COFFEE	7	7.21
MACCHIATO - ESPRESSO WITH STEAMED FOAM	6	6.18
AMERICANO - SHOT OF ESPRESSO WITH HOT WATER	4	4.12
LATTE - ESPRESSO WITH STEAMED MILK	6	6.18
CAFE AU LAIT - AMERICAN COFFEE WITH STEAMED MILK	5	5.15
MOCHACCINO - ESPRESSO, SHOT OF CHOCOLATE WITH STEAMED MILK	6	6.18
CAPPUCCINO - ESPRESSO WITH STEAMED MILK	7	7.21
ICED CAPPUCCINO	8	8.24
ICED MOCHACCINO	8	8.24
NESCAFÉ ICED FRAPPE	7	7.21

FOUNTAIN DELIGHTS

	CASH	CARD
FRENCH ICE CREAM (1 SCOOP)	6	6.18
FRENCH ICE CREAM (2 SCOOPS)	8	8.24
SUNDAES	10	10.30
MILK SHAKES	9	9.27
EGG CREAMS	5	5.15
BANANA ROYALE - WITH 3 SCOOPS OF ICE CREAM, CHOCOLATE SYRUP, NUTS, & WHIPPED CREAM	12	12.36
TOWER ICE CREAM SODA - ICE CREAM IN SODA & WHIPPED CREAM	12	12.36
ICE CREAM CAKE ROLL - CHOCOLATE SYRUP & WHIPPED CREAM	9	9.27
TARTUFO - CHOCOLATE & VANILLA ICE CREAM COVERED IN HARD CHOCOLATE ICING, WITH CHERRIES IN THE MIDDLE	10	10.30

**CHOCOLATE LAVA
CAKE WITH
ICE CREAM
11 | 11.33**

INTERNATIONAL COFFEES

YOUR CHOICE - 10 | 10.30

MEXICAN COFFEE WITH KAHLUA • IRISH COFFEE WITH IRISH WHISKEY
ITALIAN COFFEE WITH SAMBUCA • GREEK COFFEE WITH METAXA
ENGLISH COFFEE WITH DRAMBUIE • RUSSIAN COFFEE WITH VODKA
FRENCH COFFEE WITH GRAND MARNIER

YOGURT

PLAIN YOGURT	8	8.24
WITH FRUIT	11	11.33
YOGURT WITH BAKED APPLE	11	11.33
YOGURT SMOOTHIES - BLUEBERRY, BANANA, BANANA-STRAWBERRY, OR PINEAPPLE	10	10.30
GREEK YOGURT	9	9.27
WITH GRANOLA & HONEY	10	10.30
WITH PINEAPPLE, BANANA, OR STRAWBERRIES	12	12.36
TOPPINGS - TOASTED COCONUT, CAROB, GRANOLA, RAISINS, WALNUTS	+1	+1.03 EACH

CLASSIC SIGNATURE DISHES ARE SERVED WITH TRADITIONAL PRE-SELECTED SIDES.

\$6 MINIMUM PURCHASE FOR EACH SEATED GUEST

OUR FOOD MAY CONTAIN OR COME INTO CONTACT WITH COMMON ALLERGENS, SUCH AS:
DAIRY, EGGS, WHEAT, SOYBEANS, TREE NUTS, PEANUTS, FISH, OR SHELLFISH.
IF YOU HAVE A FOOD ALLERGY, PLEASE SPEAK TO YOUR SERVER.
ALL SUBSTITUTIONS CHARGED À LA CARTE

*CONSUMING RAW OR UNDER COOKED MEATS, POULTRY, SEAFOOD, SHELLFISH,
OR EGGS MAY INCREASE YOUR RISK OF FOOD BORNE ILLNESS.